

# VBS CATALOG 2016



VBS THE ULTIMATE CLIMB Exodus 34:2b  
Hiking Up to Meet God!



**Ultimate Climb!  
VBS Posters**  
Item: 12278  
**\$9<sup>99</sup>** [set of 7]

**Ultimate Climb!  
Children T-shirts**  
Item: 10201  
S, M, L  
**\$8<sup>99</sup>**

**Ultimate Climb!  
Adult T-shirts**  
M-4XL  
Item: 10440  
Item: 10442  
Item: 10202  
Item: 10445  
Item: 10446-3X  
Item: 10447-4X  
Starting at  
**\$10<sup>99</sup>**



**Ultimate Climb!  
Cap**  
Item: 12279  
**\$9<sup>99</sup>**



**Ultimate Climb!  
Cinch Backpack**  
Item: 12081  
**\$3<sup>00</sup>**



**Pax the Penguin  
Hand Puppet**  
Item: 11883  
**\$14<sup>95</sup>**

**Ultimate Climb!  
Aluminum Water  
Bottle**  
Item: 12280  
**\$3<sup>25</sup>**



**ORDERING IS EASY!**  
**CALL 1.800.359.9398**  
**VISIT [sspbnbc.com](http://sspbnbc.com)**

Supplies are limited.  
Order by May 15th  
for best availability.

# CONTENTS

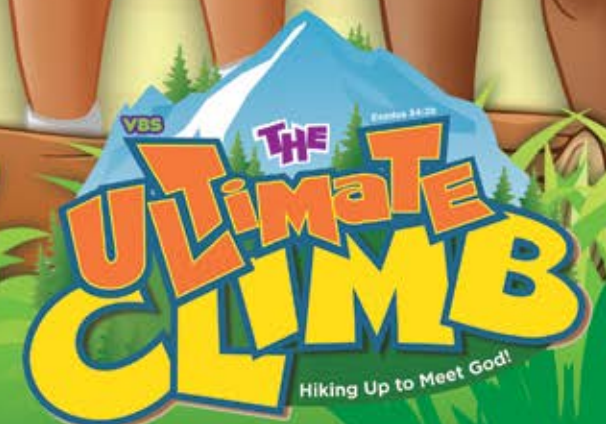
Promotional Items	2
Theme/ Five Daily Climbs	4-5
Promotional Items	6-7
Director's Resources	8-9
Elementary Teacher Resources	10-11
Elementary Pupil Resources	12
Middle School Resources	14
High School Resources	15
Young Adult Resources	16
Adult Resources	18
FedEx Shipping Rates	20
UPS Shipping Rates	21
USPS Shipping Rates	22
Policies	23
Contents of The Ultimate Climb! Starter Kit	24

# Five Daily Climbs

(Exodus 34:2b)

God revealed Himself and various aspects of His character on the mountaintop, and today we still hear of people having their own mountaintop experiences.

This year, we will hike up five biblical mountains to meet God, drawing closer to Him as we encounter Him anew through Scripture, on **The Ultimate Climb!**





**Ultimate Climb!  
VBS Appreciation Certificate**  
Item: 262  
**\$4<sup>99</sup>** [pkg of 10]

**Ultimate Climb! VBS Pencils**  
Item: 10103  
**\$5<sup>00</sup>** [pkg of 10]

**Ultimate Climb!  
VBS Attendance Certificate**  
Item: 250  
**\$7<sup>99</sup>** [pkg of 50]

**Ultimate Climb!  
VBS Perfect Attendance Certificate**  
Item: 249  
**\$4<sup>99</sup>** [pkg of 10]

**Ultimate Climb!  
VBS Silicone Bracelet**  
Item: 12287  
**\$12<sup>99</sup>** [pkg of 10]

**Ultimate Climb! VBS Ink Pen**  
Item: 10130  
**\$0<sup>99</sup>**

**Ultimate Climb!  
VBS Outreach Door Hanger**  
Item: 55001  
**\$7<sup>95</sup>** [pkg of 50]

**Ultimate Climb!  
VBS Buttons**  
Item: 10104  
**\$9<sup>99</sup>** [pkg of 25]

**Ultimate Climb! VBS Announcement Poster**  
Item: 235  
**\$2<sup>99</sup>**

**Ultimate Climb!  
VBS Invitation to Attend**  
Item: 247  
**\$6<sup>99</sup>** [pkg of 50]

**Ultimate Climb! VBS Bookmarks**  
Item: 10470  
**\$5<sup>00</sup>** [pkg of 10]

**Ultimate Climb!  
My Journey Journals Craft Kit**  
Item: 12956  
**\$8<sup>99</sup>**



**Ultimate Climb!  
VBS Plastic Dog Tags**  
Item: 19485  
**\$12<sup>99</sup>** [pkg of 10]



**Ultimate Climb!  
VBS Balloons**  
(Assorted Colors)  
Item: 12274  
**\$5<sup>99</sup>** [pkg of 25]



**Ultimate Climb! Outdoor Vinyl Banner**  
Item: 12276  
**\$69<sup>99</sup>**



**Ultimate Climb!  
VBS Compass Parachute Cord Bracelets Craft Kit**  
Item: 12957  
**\$17<sup>99</sup>**

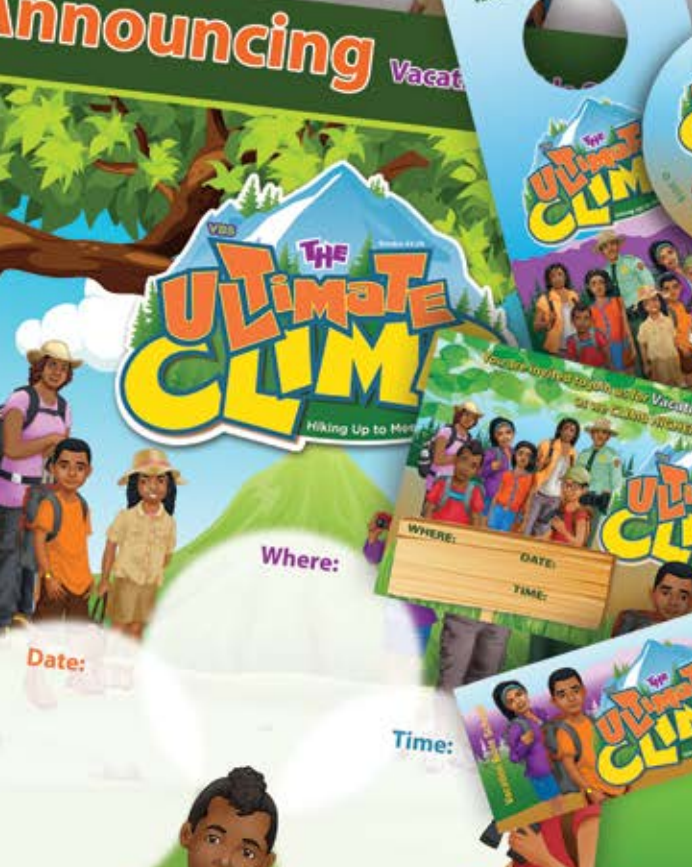


**Ultimate Climb!  
VBS Beaded Cross Suncatcher Craft Kit**  
Item: 12958  
**\$26<sup>99</sup>**



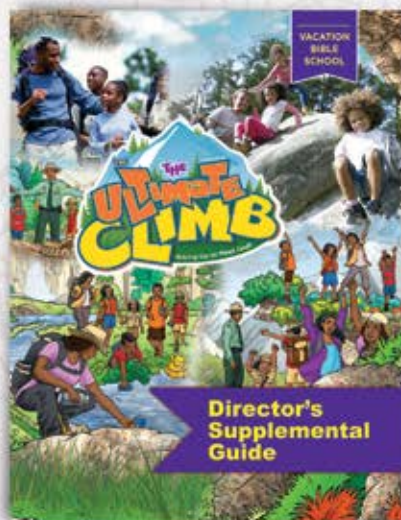
**Ultimate Climb!  
VBS Beaded Cross Key Chain Craft Kit**  
Item: 12959  
**\$10<sup>99</sup>**

**Ultimate Climb!  
VBS Backpack**  
Item: 11880  
**\$12<sup>95</sup>** [limited quantity]

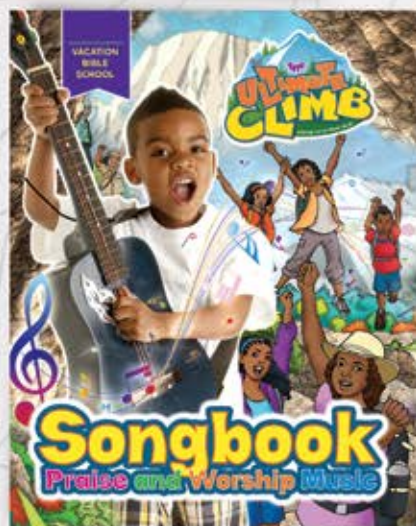




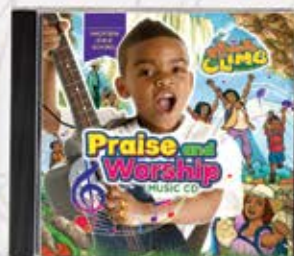
**VBS Director's Guide 2016**  
Item: 219  
**\$4.15**



**VBS Director's Supplemental Guide 2016**  
Item: 267  
**\$3.30**



**Ultimate Climb! VBS 2016 Songbook**  
Item: 11489-16  
**\$6.99**



**Ultimate Climb! VBS 2016 Music CD**  
Item: 12285  
**\$9.99**

# Director's Resources

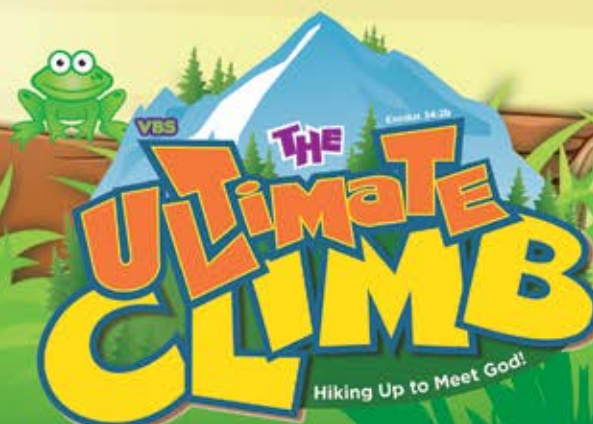
(for the Ultimate Climb)



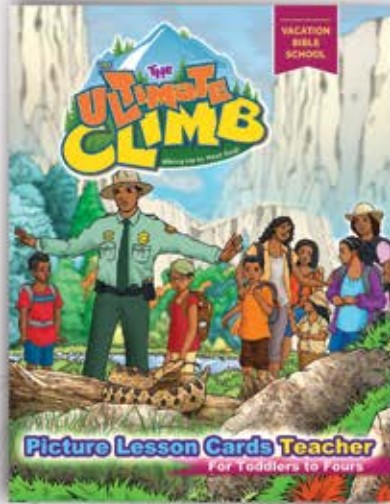
As a result of experiencing these lessons, participants will be able to do the following:

- Learn that our mountaintop experiences are meant to transform us.
- Learn that we are called to go back down the mountain to serve.

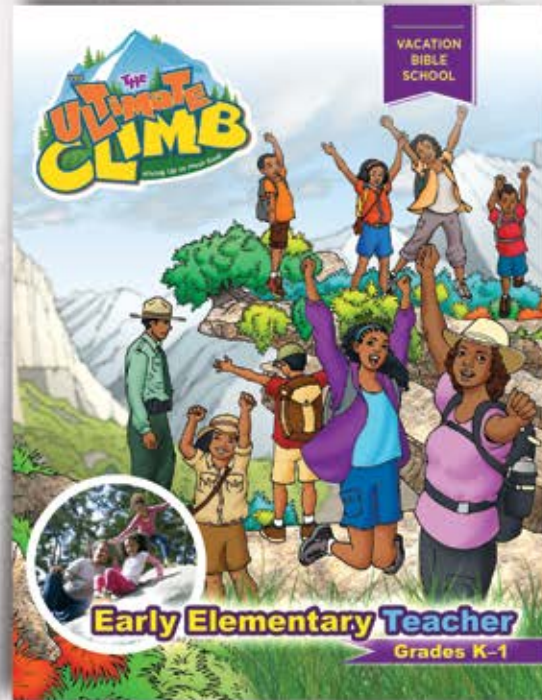
So let's pack our gear and hike up a few mountains!



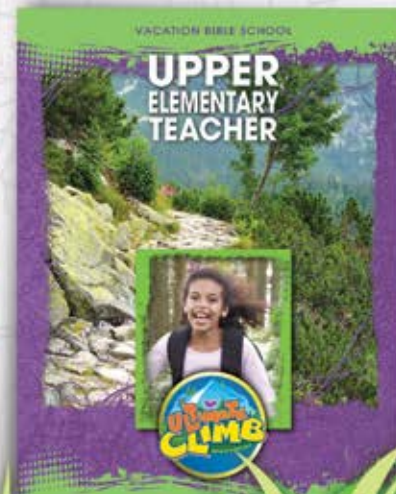
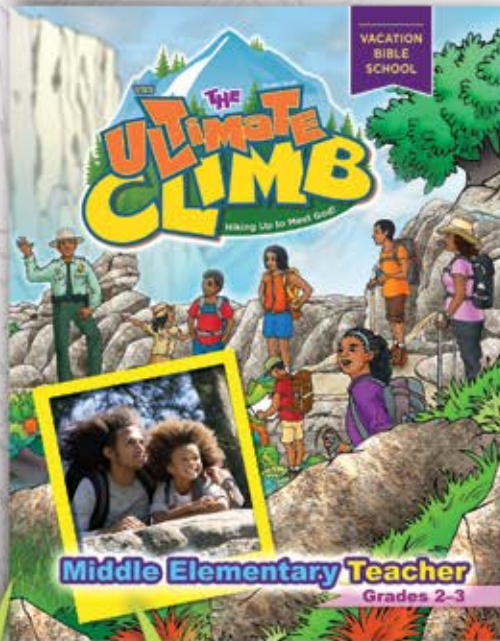
**VBS Picture Lesson Cards  
Teacher 2016**  
Item: 266  
**\$3<sup>30</sup>**



**VBS Early Elementary Teacher 2016**  
Item: 251  
**\$4<sup>10</sup>**



**VBS Middle Elementary  
Teacher 2016**  
Item: 252  
**\$4<sup>10</sup>**



**VBS Upper Elementary  
Teacher 2016**  
Item: 253  
**\$4<sup>10</sup>**

# VBS Teacher Elementary Resources

(for the Ultimate Climb)



Each teacher book is filled with resources to assist you with teaching. These helps include VBS pledges, age-level characteristics of your students, tips for sharing God's plan of salvation, and more!

### Toddlers to Fours:

- Each lesson includes three easy-to-make or easy-to-present activities

### Early Elementary (Kindergarten to Grade 1):

- Opening activities, discussion questions, action songs, and creative activities
- Extra activities and pictures to display in the classroom

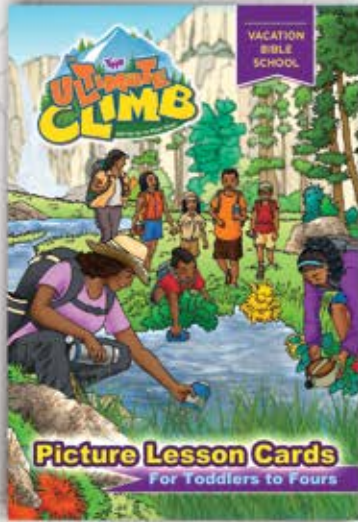
### Middle Elementary (Grades 2-3) and Upper Elementary (Grades 4-6):

- Discussion questions and warm-up activities are included
- Instructions for the student lesson activities and a short practical application section

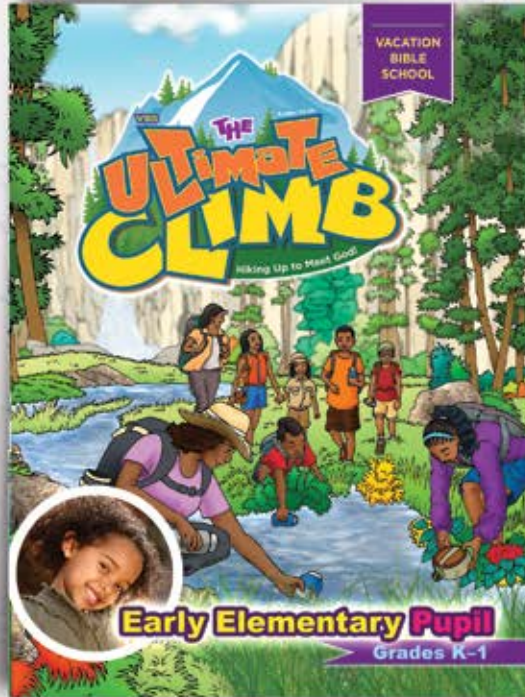




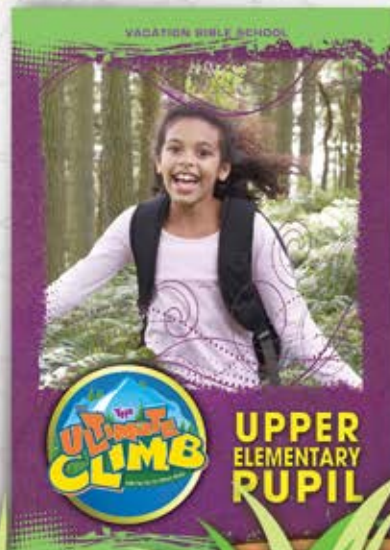
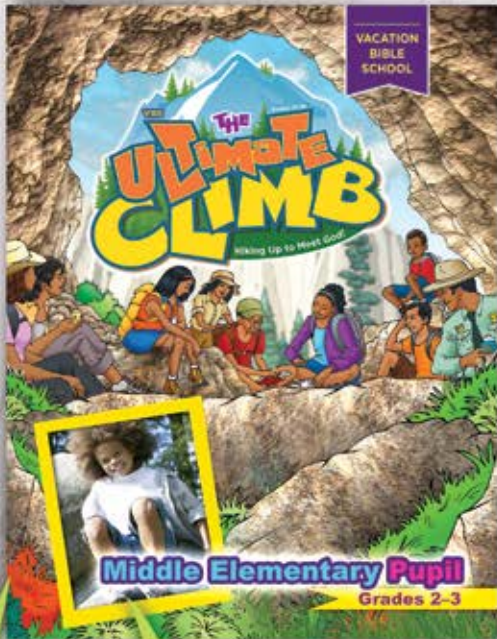
**VBS Picture  
Lesson Cards 2016**  
Item: 243  
**\$285**



**VBS Early Elementary  
Pupil 2016**  
Item: 255  
**\$285**



**VBS Middle  
Elementary  
Pupil 2016**  
Item: 256  
**\$285**



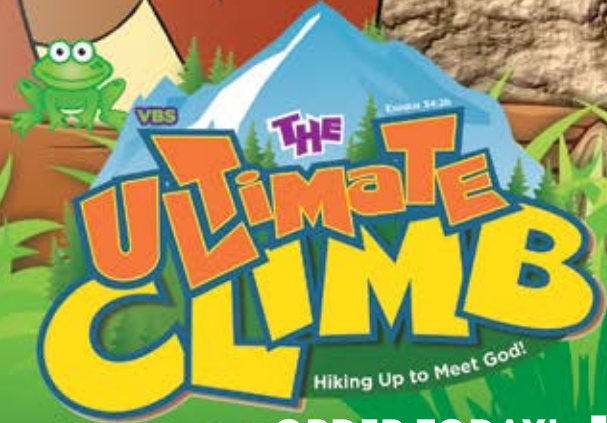
**VBS Upper  
Elementary  
Pupil 2016**  
Item: 257  
**\$285**



**VBS Pupil  
Elementary Resources**  
(for the Ultimate Climb)

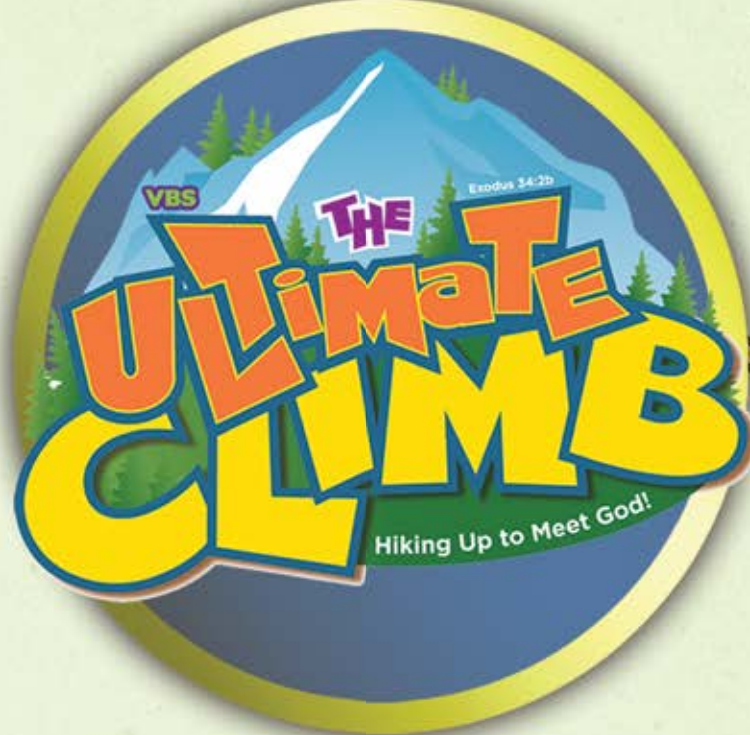


**Ascension**



# Mountain

MIDDLE SCHOOL  
RESOURCES



# Mountain

HIGH SCHOOL  
RESOURCES

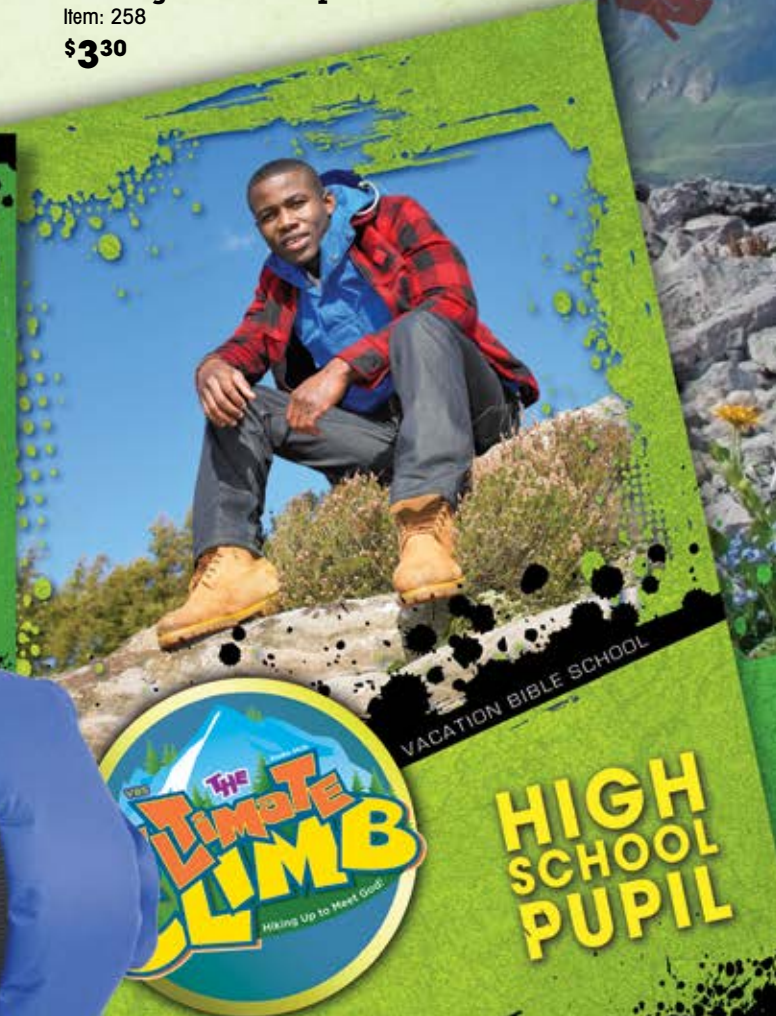
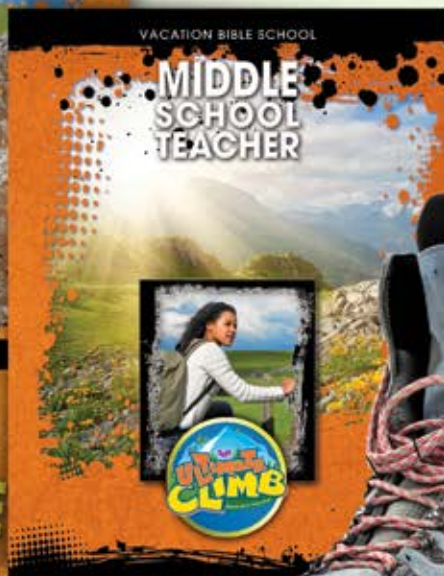


VBS Middle School Pupil 2016  
Item: 227  
**\$3<sup>30</sup>**

VBS High School Teacher 2016  
Item: 226  
**\$4<sup>10</sup>**

VBS High School Pupil 2016  
Item: 258  
**\$3<sup>30</sup>**

VBS Middle School  
Teacher 2016  
Item: 228  
**\$4<sup>10</sup>**





# YOUNG ADULT RESOURCES



## VBS Young Adult Pupil 2016

Item: 241

\$3<sup>30</sup>

## VBS Young Adult Teacher 2016

Item: 239

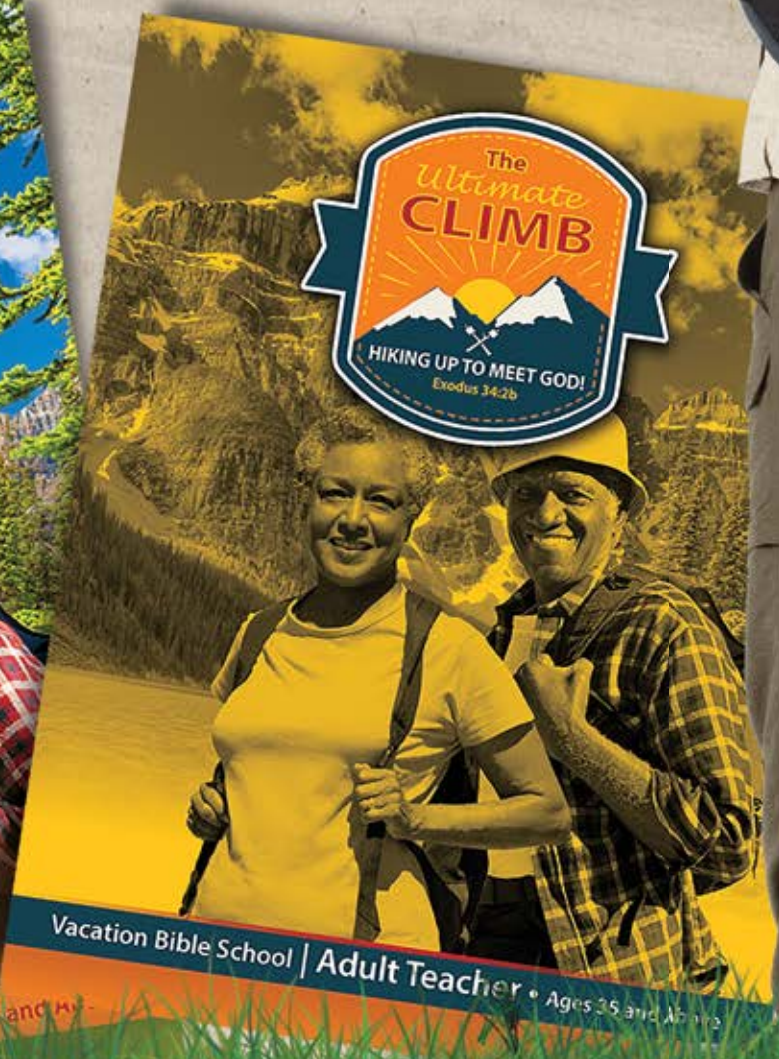
\$4<sup>10</sup>



**ADULT  
RESOURCES**

**VBS Adult Pupil 2016**  
Item: 259  
**\$3<sup>30</sup>**

**VBS Adult  
Teacher 2016**  
Item: 254  
**\$4<sup>10</sup>**





## FEDEX SHIPPING AND HANDLING CHARGES

When sending payment with orders, use the chart below to figure shipping and handling costs.

### SHIPPING AND HANDLING RATES

Merchandise Cost	Standard	3 Day Select	2nd Day Air	Next Day Air
0 - 10.00	\$ 6.25	21.35	32.45	56.35
10.01 - 25.00	\$ 8.25	23.35	34.45	65.35
25.01 - 40.00	\$ 10.25	24.35	35.45	73.35
40.01 - 55.00	\$ 12.25	25.35	36.45	81.35
55.01 - 70.00	\$ 14.25	26.35	37.45	89.35
70.01 - 85.00	\$ 15.25	27.35	38.45	97.35
85.01 - 100.00	\$ 16.25	28.35	39.45	105.35
100.01 - 150.00	\$ 17.25	29.35	40.45	113.45
150.01 - 200.00	\$ 19.25	31.35	42.45	122.35
200.01 - 300.00	\$ 20.25	32.35	43.45	130.35
300.01 - UP	15%	17%	19%	21%

- Prices are subject to change without notice.
- All shipments sent M-F, 5-10 business days, ground delivery.
- Express orders received by 1:00 pm CST are shipped the same day.
- Call for Saturday delivery (metropolitan areas only).
- Express delivery is required on orders shipped to APO's, FPO's, AK, HI, Puerto Rico, and all international locations.
- No drop shipments.
- All dock pickups will be charged SSPB handling fees.
- All freight shipments are charged SSPB handling fees.
- **RUSH ORDERS**—Normal delivery time is 5-10 working days after an order is entered. If you need your order sooner than the normal shipping schedule and are willing to pay the special shipping charge, along with a \$5.00 rush processing fee, then request special shipping at the time your order is placed.
- **BOOKSTORES ONLY**. . . include 8% of total before discount for FedEx, UPS, and United States Postal Service mailing only.

Orders shipped FEDEX

**IF YOU HAVE A QUESTION ABOUT YOUR ORDER:**

Call Toll Free: 1-800-359-9398; or E-mail us at [customer@sspbnbc.com](mailto:customer@sspbnbc.com)

**Monday—Friday • 8:00 a.m.— 4:15 p.m. CST**

<b>and give:</b>	1) your SSPB account number	2) shipping number from your packing list (if received)	3) date of your order
------------------	-----------------------------	---	-----------------------



## UPS SHIPPING AND HANDLING CHARGES

When sending payment with orders, use the chart below to figure shipping and handling costs.

### SHIPPING AND HANDLING RATES

Merchandise Cost	Standard	3 Day Select	2nd Day Air	Next Day Air
0 - 10.00	\$ 6.25	21.35	32.45	56.35
10.01 - 25.00	\$ 8.25	23.35	34.45	65.35
25.01 - 40.00	\$ 10.25	24.35	35.45	73.35
40.01 - 55.00	\$ 12.25	25.35	36.45	81.35
55.01 - 70.00	\$ 14.25	26.35	37.45	89.35
70.01 - 85.00	\$ 15.25	27.35	38.45	97.35
85.01 - 100.00	\$ 16.25	28.35	39.45	105.35
100.01 - 150.00	\$ 17.25	29.35	40.45	113.45
150.01 - 200.00	\$ 19.25	31.35	42.45	122.35
200.01 - 300.00	\$ 20.25	32.35	43.45	130.35
300.01 - UP	15%	17%	19%	21%

- Prices are subject to change without notice.
- All shipments sent M-F, 5-10 business days, ground delivery.
- Express orders received by 1:00 pm CST are shipped the same day.
- Call for Saturday delivery (metropolitan areas only).
- Express delivery is required on orders shipped to APO's, FPO's, AK, HI, Puerto Rico, and all international locations.
- No drop shipments.
- All dock pickups will be charged SSPB handling fees.
- All freight shipments are charged SSPB handling fees.
- **RUSH ORDERS**—Normal delivery time is 5-10 working days after an order is entered. If you need your order sooner than the normal shipping schedule and are willing to pay the special shipping charge, along with a \$5.00 rush processing fee, then request special shipping at the time your order is placed.
- **BOOKSTORES ONLY**. . . include 8% of total before discount for FedEx, UPS, and United States Postal Service mailing only.

Orders shipped UPS unless otherwise requested.

**IF YOU HAVE A QUESTION ABOUT YOUR ORDER:**

Call Toll Free: 1-800-359-9398; or E-mail us at [customer@sspbnbc.com](mailto:customer@sspbnbc.com)

**Monday—Friday • 8:00 a.m.— 4:15 p.m. CST**

<b>and give:</b>	1) your SSPB account number	2) shipping number from your packing list (if received)	3) date of your order
------------------	-----------------------------	---	-----------------------



## U.S. Postal Service POSTAGE AND HANDLING CHART

When sending payment with orders, use the charts below to figure postage and handling cost for U.S. mail.

- Call Customer Service for cost of Express (Metropolitan Areas) delivery.
- Any additional charges will be prepaid by SSPB and added to your account.
- Prices are subject to change.

MERCHANDISE COST	ZONE 1	ZONE 4	ZONE 5	ZONE 6	ZONE 7	ZONE 8
	TENNESSEE	ARKANSAS DISTRICT OF COLUMBIA FLORIDA ILLINOIS IOWA KANSAS LOUISIANA MARYLAND MICHIGAN MISSISSIPPI NEBRASKA NORTH CAROLINA PENNSYLVANIA SOUTH CAROLINA TEXAS VIRGINIA WISCONSIN	AE MILITARY CONNECTICUT COLORADO DELAWARE MAINE MASSACHUSETTS MINNESOTA NEW HAMPSHIRE NEW JERSEY NEW YORK NORTH DAKOTA OKLAHOMA RHODE ISLAND SOUTH DAKOTA VERMONT	MONTANA NEW MEXICO UTAH WYOMING	ARIZONA CALIFORNIA IDAHO NEVADA PUERTO RICO VIRGIN ISLANDS	ALASKA AP MILITARY HAWAII OREGON WASHINGTON
0-10.00	\$5.34	\$5.34	\$5.64	\$5.81	\$6.08	\$6.50
10.01-25.00	\$7.34	\$7.34	\$9.01	\$10.30	\$11.36	\$13.12
25.01-40.00	\$8.38	\$8.38	\$11.10	\$13.04	\$14.03	\$15.76
40.01-55.00	\$10.72	\$12.72	\$14.52	\$16.51	\$18.30	\$20.77
55.01-70.00	\$13.07	\$14.54	\$16.43	\$18.33	\$20.62	\$24.10
70.01-85.00	\$15.13	\$16.93	\$19.40	\$21.88	\$24.53	\$29.03
85.01-100.00	\$16.33	\$19.13	\$21.00	\$23.60	\$26.93	\$34.16
100.01-150.00	\$20.62	\$24.43	\$28.69	\$32.43	\$35.38	\$40.88
150.01-200.00	\$24.23	\$26.88	\$34.83	\$40.86	\$45.13	\$52.77
200.01-300.00	\$26.40	\$31.84	\$41.00	\$48.41	\$53.38	\$65.92
300.01-UP	11%	13%	15%	17%	19%	21%

## POLICIES

### NEW SHIPPING INFO

We normally ship UPS ground because it is efficient, cost-effective, and insured. UPS requires a street address because they will not deliver to a post office box. When you place your order, you will be able to request overnight or second-day shipping. As with all shipments, please check your order as soon as it arrives. In the unlikely event that you have problems, please note your invoice number and as much other information as possible to increase our ability to help you before you call us.

### STANDING ORDERS

As an added convenience, SSPB offers our convenient, yearly (annual) shipping and billing options for quarterly curriculum. Simply indicate "Standing Order Curriculum Shipment Program," complete the enclosed order form, and send payment in full for the year. Following your initial order, we will begin sending your predetermined quantities of curriculum. Standing orders are processed and shipped to arrive approximately three (3) weeks prior to the beginning of the next quarter.

### AUTOMATIC ORDERS

SSPB also provides an automatic shipping and billing option for quarterly Sunday school curriculum. To begin, you need an approved credit application on file. You may also call Customer Service at 1-800-359-9398 and your sales representative will assist you in opening an account and placing your initial order. Following your initial order, we will begin sending your predetermined quantities of curriculum. Automated orders are processed and shipped to arrive approximately three (3) weeks prior to the beginning of the next quarter. Credit terms are Net thirty (30) days from date of invoice. To make changes, notify Customer Care at least ninety (90) days prior to the quarter.

### MAIL SERVICES

If you are receiving duplicate catalogs or want to be removed from our mailing list, please contact Customer Service. If you would like to send a catalog to a friend, call 1-800-359-9398 with his or her name and address. Occasionally, our mailing lists are made available to other companies. If you would like to exclude your name and address, please call Customer Service.

### PAYMENT AND CREDIT TERMS

Credit terms are Net thirty (30) days from date of invoice. Accounts requesting credit hereby agree to pay within these terms. We also accept Visa and MasterCard payments on accounts, or to prepay an order. When making a payment on an account, please include a copy of your monthly statement. Payments should be sent to Sunday School Publishing Board, 330 Charlotte Avenue, Nashville, TN 37201-1188. A \$25 fee will be charged for all returned checks.

### RETURN POLICY

All returns require advanced authorization, an authorization number, and approval from our office prior to sending them back. Items must be returned within thirty (30) days from date of invoice to receive credit for any discrepancy. Return shipping charges are the responsibility of the customer. All customers should open boxes/packages immediately upon receiving orders and review to check for accuracy of order. Report any discrepancies at that time. If items must be returned, please ship orders prepaid. Credit for postage will be issued only if SSPB is in error. **WE CANNOT ACCEPT RETURNS OF VBS RESOURCES.**

### ACCESS SSPB

We want to provide the very best possible service to you. Our Customer Care Representatives are knowledgeable, courteous, and eager to help you with any questions or concerns. We are accessible 24 hours a day. You can reach us by phone, fax, or regular mail. Please have your customer number and item catalog numbers ready when you place an order. Your customer account number is located on your catalog-mailing label.

Phone: 1-800-359-9398

Fax: 1-615-242-4929

E-mail: [customercare@sspbnbc.com](mailto:customercare@sspbnbc.com)

### RUSH ORDERS

Normal delivery time is 5-10 working days after an order is entered. If you need your order sooner than the normal shipping schedule and are willing to pay the special shipping charge, along with a \$5.00 rush processing fee, then request special shipping at the time your order is placed.

# Sunday School Publishing Board

of the National Baptist Convention, USA, Inc.  
330 Charlotte Avenue • Nashville, TN 37201-1188

Nonprofit  
Organization  
U.S. Postage  
PAID  
Nashville, TN  
Permit No. 1484

Return Service Requested



## THE ULTIMATE CLIMB! STARTER KIT

### INCLUDES:

- Director's Guide
- Director's Supplemental Guide
- Praise CD
- Praise Songbook
- Pupil and Teacher books  
(for every age level)
- Resource CD/Promo Video

### CHURCH RESOURCES:

- Door hanger
- Certificates
- 1 Poster (from poster set)
- Registration cards
- Invitation
- Bookmark
- Announcement Poster
- Attendance Chart
- Name tag
- Button

### GIFTS & SOUVENIRS:

- Silicone bracelet
- Aluminum water bottle
- Pencil
- Pen
- 1 Balloon
- 1 Dog Tag
- Sample Crafts

THE ULTIMATE  
CLIMB  
VBS STARTER KIT

**\$69<sup>99</sup>**

ITEM: 238